



**PROVINCIA DI LA SPEZIA
COMUNE DI SESTA GODANO**

**PIANO URBANISTICO COMUNALE
(art. 5 L.R. 36/1997)**



*Il Sindaco
pro-tempore*
Marco Traversone

Il Segretario Comunale
Dott. Paola Folignani

Progettisti incaricati:
arch. Rinaldo Delvigo - arch. Antonio Scopesi

Consulenti:
Indago srl - idrogeologia
Collaboratori: **arch. Arianna Mazzi**
dott. agr. Sabrina Diamanti – agronomia

**DESCRIZIONE FONDATIVA
SISTEMI AMBIENTALI ED
ORGANISMI TERRITORIALI**

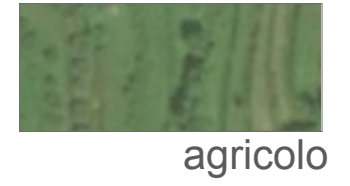
**NUCLEI ED AGGREGATI STORICI
Lettura dei caratteri ambientali degli insediamenti**

elaborato adeguato alle modifiche apportate in sede di approvazione
con DGR 202 del 18.03.2022



album:
DF 1a
scala:
1:2000

Data:
FEBBRAIO 2019
AGG, APRILE 2022

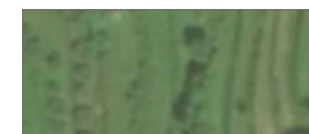
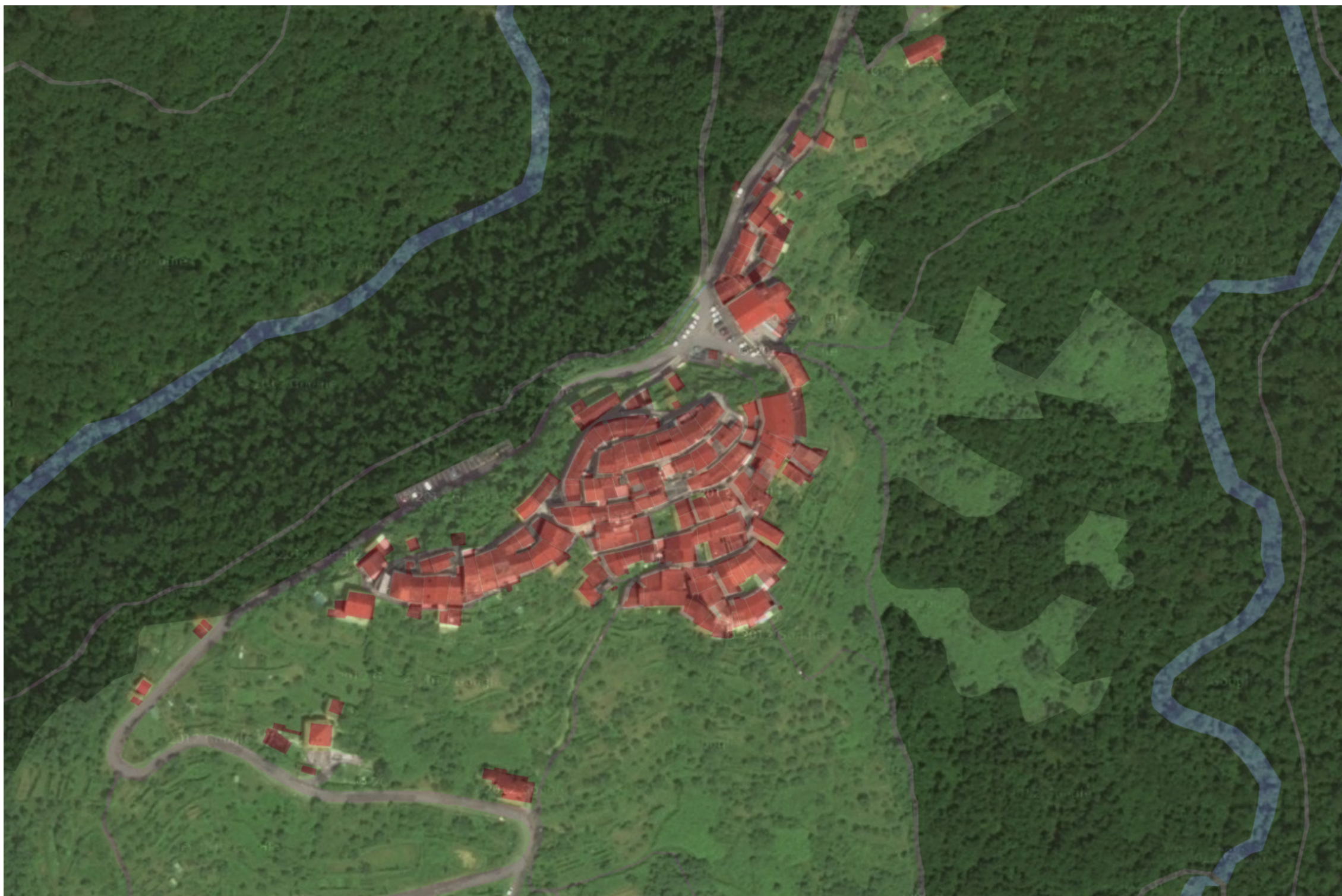


DESCRIZIONE FONDATIVA
2. SISTEMI AMBIENTALI ED ORGANISMI TERRITORIALI

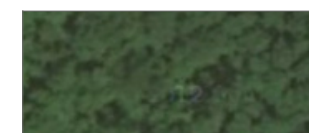
NUCLEI ED AGGREGATI STORICI
 Lettura dei caratteri ambientali dell'insediamento

RIO

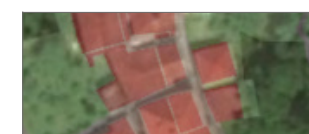
1/a



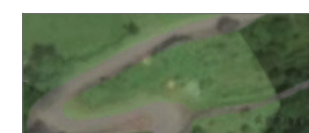
agricolo



bosco



tessuto



rete stradale



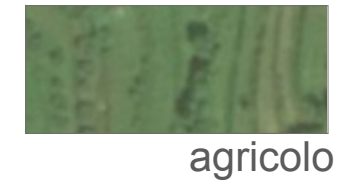
idrografia

DESCRIZIONE FONDATIVA
2. SISTEMI AMBIENTALI ED ORGANISMI TERRITORIALI

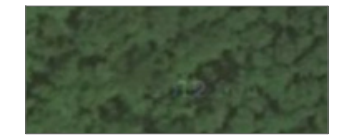
NUCLEI ED AGGREGATI STORICI
 Lettura dei caratteri ambientali dell'insediamento

GROPPO

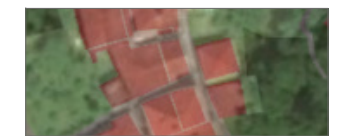
2/a



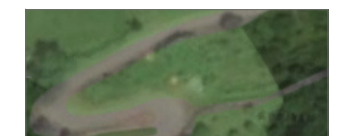
agricolo



bosco



tessuto



rete stradale



idrografia

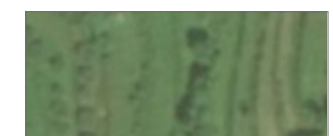
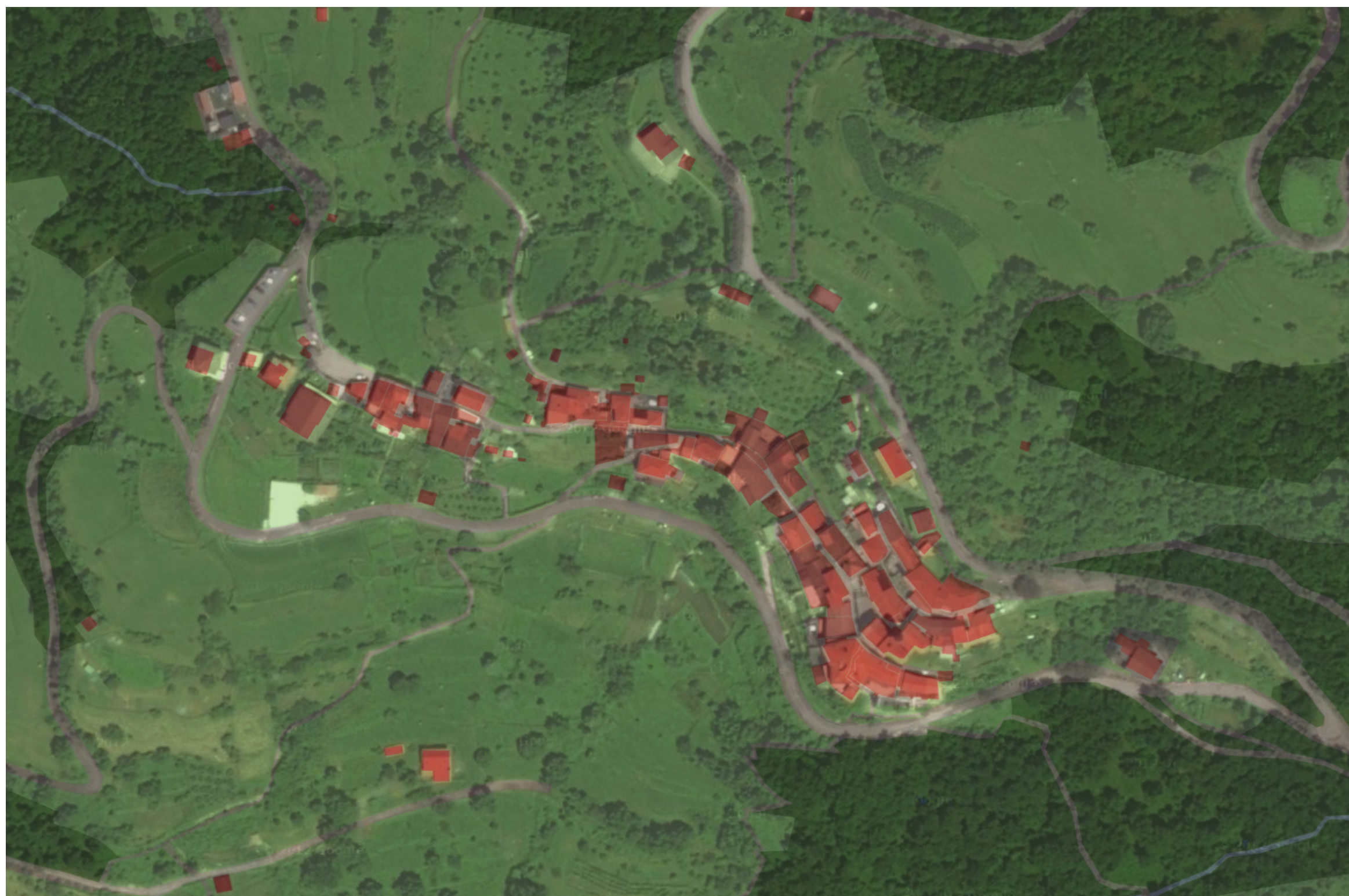
DESCRIZIONE FONDATIVA
2. SISTEMI AMBIENTALI ED ORGANISMI TERRITORIALI

NUCLEI ED AGGREGATI STORICI

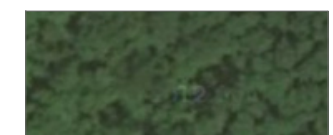
Lettura dei caratteri ambientali dell'insediamento

AIROLA *sup. e inf.*

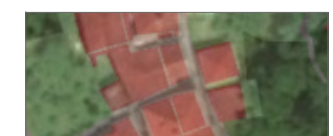
3/a



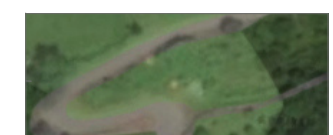
agricolo



bosco



tessuto



rete stradale



idrografia

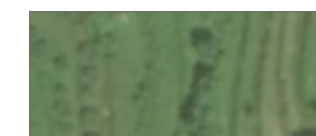
NUCLEI ED AGGREGATI STORICI

Lettura dei caratteri ambientali dell'insediamento

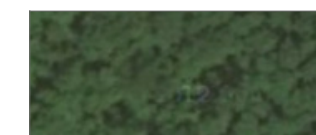
ANTESSIO

4/a

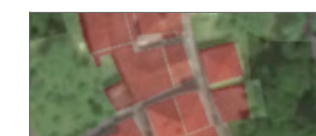
DESCRIZIONE FONDATIVA
2. SISTEMI AMBIENTALI ED ORGANISMI TERRITORIALI



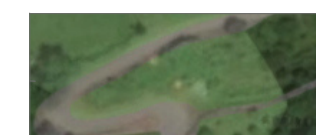
agricolo



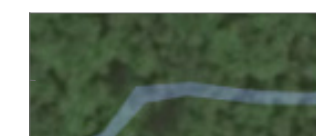
bosco



tessuto



rete stradale



idrografia

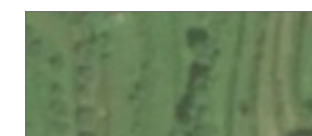
DESCRIZIONE FONDATIVA

2. SISTEMI AMBIENTALI ED ORGANISMI TERRITORIALI

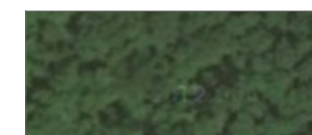
NUCLEI ED AGGREGATI STORICI
Lettura dei caratteri ambientali dell'insediamento

PIGNONA

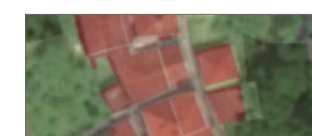
5/a



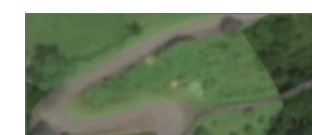
agricolo



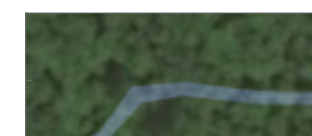
bosco



tessuto



rete stradale



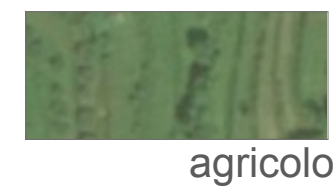
idrografia

NUCLEI ED AGGREGATI STORICI
Lettura dei caratteri ambientali dell'insediamento

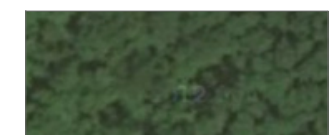
CHIUSOLA

6/a

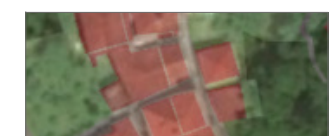
DESCRIZIONE FONDATIVA
2. SISTEMI AMBIENTALI ED ORGANISMI TERRITORIALI



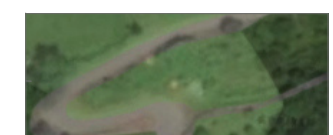
agricolo



bosco



tessuto



rete stradale



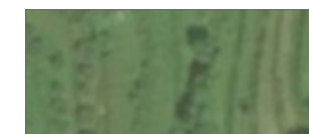
idrografia

NUCLEI ED AGGREGATI STORICI
 Lettura dei caratteri ambientali dell'insediamento

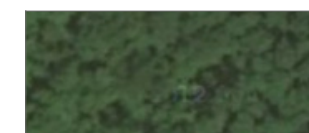
ORNETO

DESCRIZIONE FONDATIVA
2. SISTEMI AMBIENTALI ED ORGANISMI TERRITORIALI

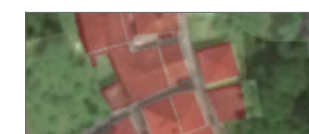
7/a



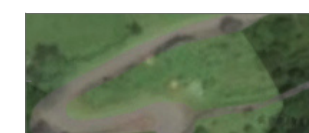
agricolo



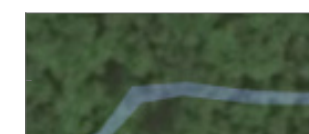
bosco



tessuto



rete stradale



idrografia

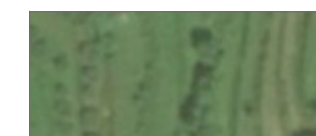
NUCLEI ED AGGREGATI STORICI

Lettura dei caratteri ambientali dell'insediamento

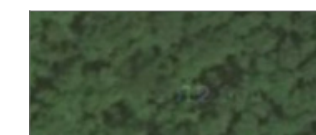
SANTA MARIA

8/a

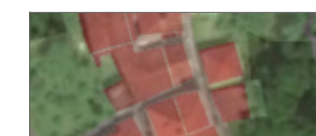
DESCRIZIONE FONDATIVA
2. SISTEMI AMBIENTALI ED ORGANISMI TERRITORIALI



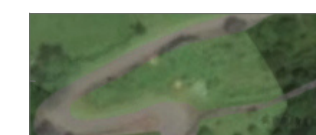
agricolo



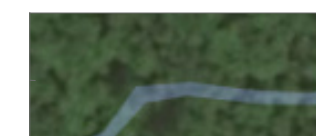
bosco



tessuto



rete stradale



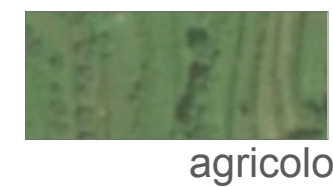
idrografia

NUCLEI ED AGGREGATI STORICI
Lettura dei caratteri ambientali dell'insediamento

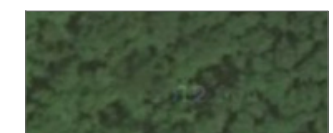
ORADORO

9/a

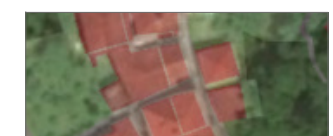
DESCRIZIONE FONDATIVA
2. SISTEMI AMBIENTALI ED ORGANISMI TERRITORIALI



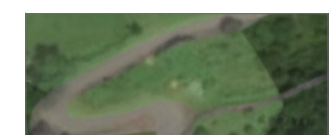
agricolo



bosco



tessuto



rete stradale



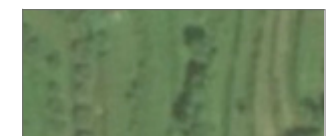
idrografia

NUCLEI ED AGGREGATI STORICI
 Lettura dei caratteri ambientali dell'insediamento

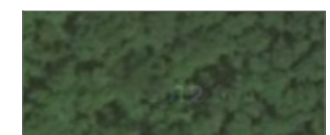
GODANO

10/a

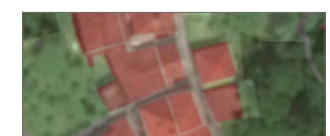
DESCRIZIONE FONDATIVA
2. SISTEMI AMBIENTALI ED ORGANISMI TERRITORIALI



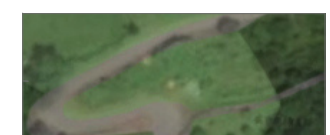
agricolo



bosco



tessuto



rete stradale



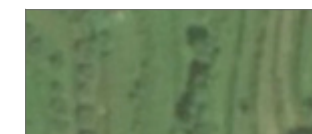
idrografia

DESCRIZIONE FONDATIVA
2. SISTEMI AMBIENTALI ED ORGANISMI TERRITORIALI

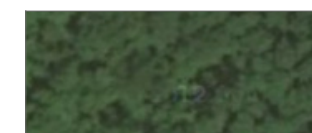
NUCLEI ED AGGREGATI STORICI
 Lettura dei caratteri ambientali dell'insediamento

MERZO' / CALABRIA

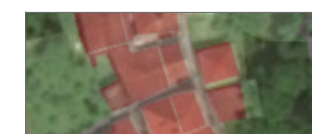
11/a



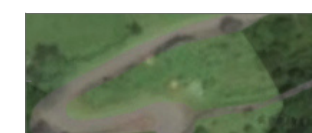
agricolo



bosco



tessuto



rete stradale



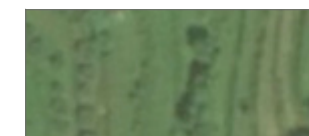
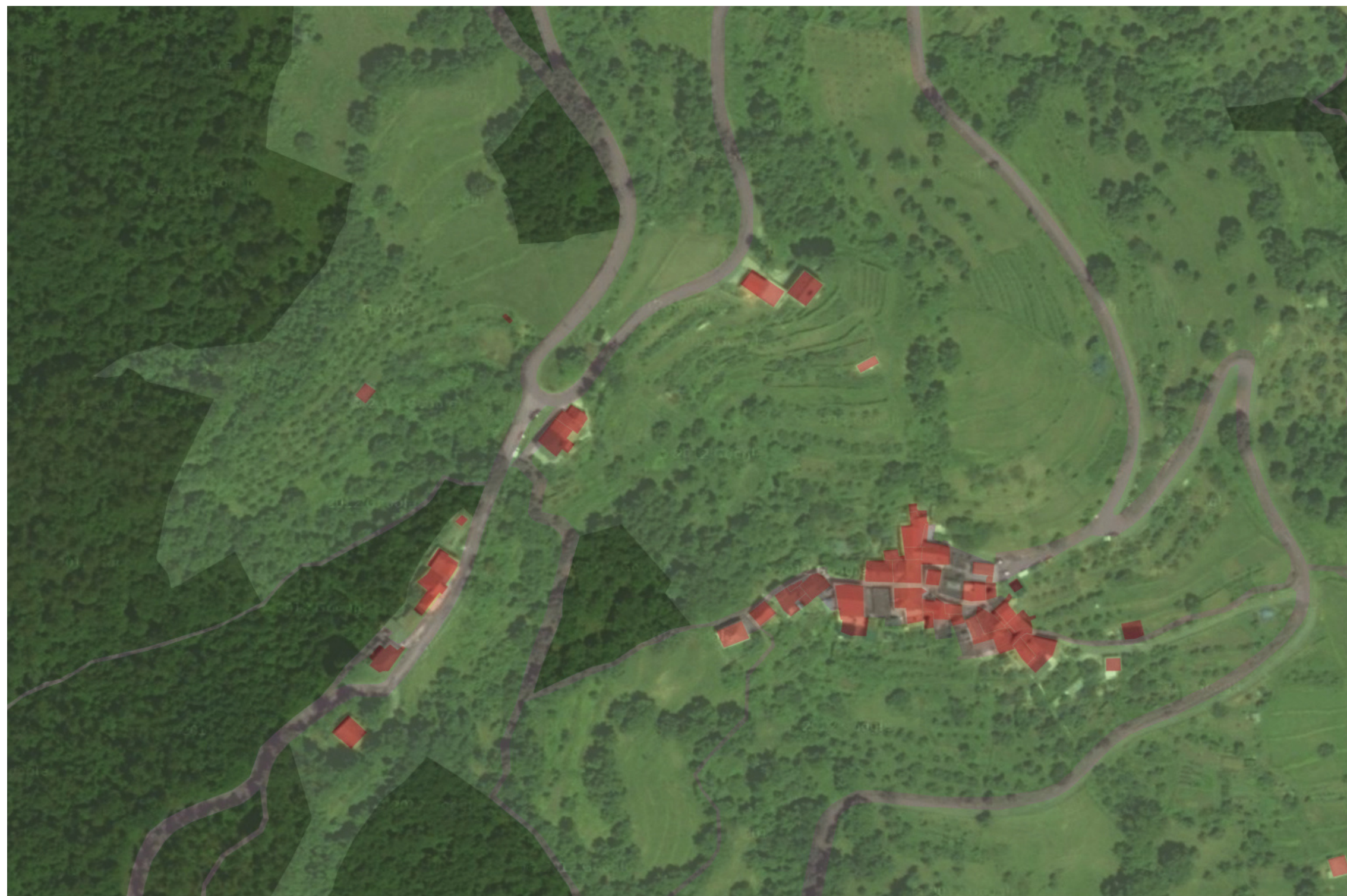
idrografia

NUCLEI ED AGGREGATI STORICI
Lettura dei caratteri ambientali dell'insediamento

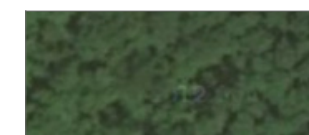
SCOGNA *superiore*

12/a

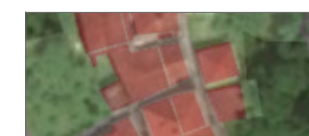
DESCRIZIONE FONDATIVA
2. SISTEMI AMBIENTALI ED ORGANISMI TERRITORIALI



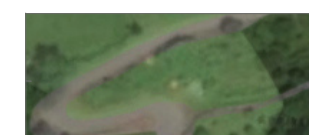
agricolo



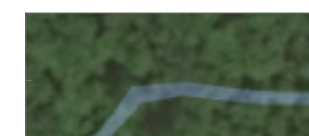
bosco



tessuto



rete stradale



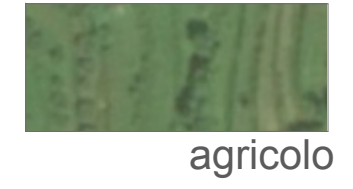
idrografia

DESCRIZIONE FONDATIVA
2. SISTEMI AMBIENTALI ED ORGANISMI TERRITORIALI

NUCLEI ED AGGREGATI STORICI
Lettura dei caratteri ambientali dell'insediamento

SCOGNA *inferiore*

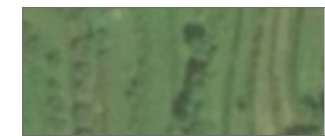
13/a



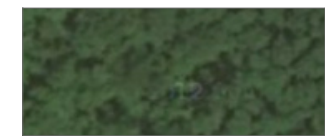
DESCRIZIONE FONDATIVA
2. SISTEMI AMBIENTALI ED ORGANISMI TERRITORIALI

NUCLEI ED AGGREGATI STORICI
 Lettura dei caratteri ambientali dell'insediamento

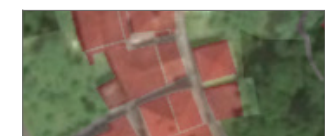
MANGIA 14/a



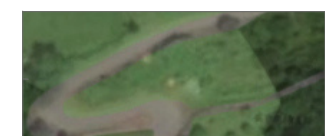
agricolo



bosco



tessuto



rete stradale

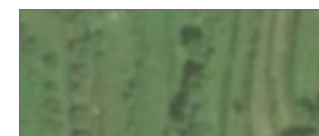


idrografia

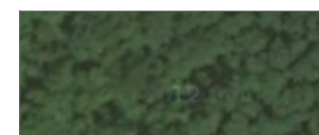
DESCRIZIONE FONDATIVA
2. SISTEMI AMBIENTALI ED ORGANISMI TERRITORIALI

NUCLEI ED AGGREGATI STORICI
 Lettura dei caratteri ambientali dell'insediamento

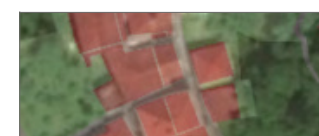
CORNICE 15/a



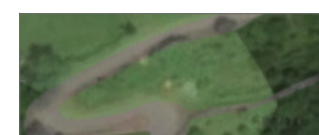
agricolo



bosco



tessuto



rete stradale



idrografia

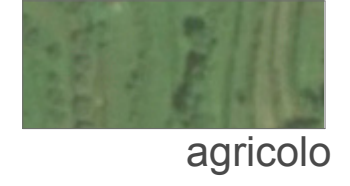
NUCLEI ED AGGREGATI STORICI

Lettura dei caratteri ambientali dell'insediamento

BERGASSANA

16/a

**DESCRIZIONE FONDATIVA
2. SISTEMI AMBIENTALI ED ORGANISMI TERRITORIALI**



NUCLEI ED AGGREGATI STORICI
 Lettura dei caratteri ambientali dell'insediamento

CA' DI VARA 18/a

DESCRIZIONE FONDATIVA
2. SISTEMI AMBIENTALI ED ORGANISMI TERRITORIALI